

Delegated Decision

15 July 2024

Temporary Traffic Regulation Order

Ordinary Decision/Key Decision No.



Report of NEIGHBOURHOODS & CLIMATE CHANGE

Paul Anderson – Strategic Highways Manager, Technical Services

Electoral division(s) affected:

Aycliffe East Ward: Cllr J Atkinson, Cllr N Jones

Purpose of the Report

To consider a request for temporary traffic regulation by Order on 20 August 2024 for the purpose of new Virgin Media (Nexfibre) infrastructure installation works on Washington Crescent, Wycliffe Close, St Aidans Walk, Taylor Walk, Smith Walk, Philpotts Walk, Defoe Crescent, Espin Walk, Wheeler Green, Newton Aycliffe.

Recommendation

It is recommended that the Council exercises its powers under the Road Traffic Regulation Act 1984 to effect a Temporary Traffic Regulation Order to facilitate the proposed works

Background

Works are proposed by Avonline on behalf of Virgin Media to undertake new telecom installation works within the confines of the highway.

Options

Other traffic management arrangements have been considered and the most appropriate method is for temporary road and footpath closures for up to 6 months.

Recommendation

The recommendation is approved and that following, consultations with the Chief of Police, arrangements be made to progress the advertising of Public Notices and sealing of an Order.

Contact: Steven Galloway

Tel: 03000 267095

Appendix 1: Implications

Legal Implications

TTRO checked, prepared and advertised via Legal Services

Finance

Costs to be charged to the scheme/applicant.

Consultation

Chief of Police, Local Members, Public Transport Providers (via the Public Transport Team)

Equality and Diversity / Public Sector Equality Duty

N/A

Human Rights

No impact

Crime and Disorder

N/A

Climate Change

N/A

Staffing

Network Management Team

Accommodation

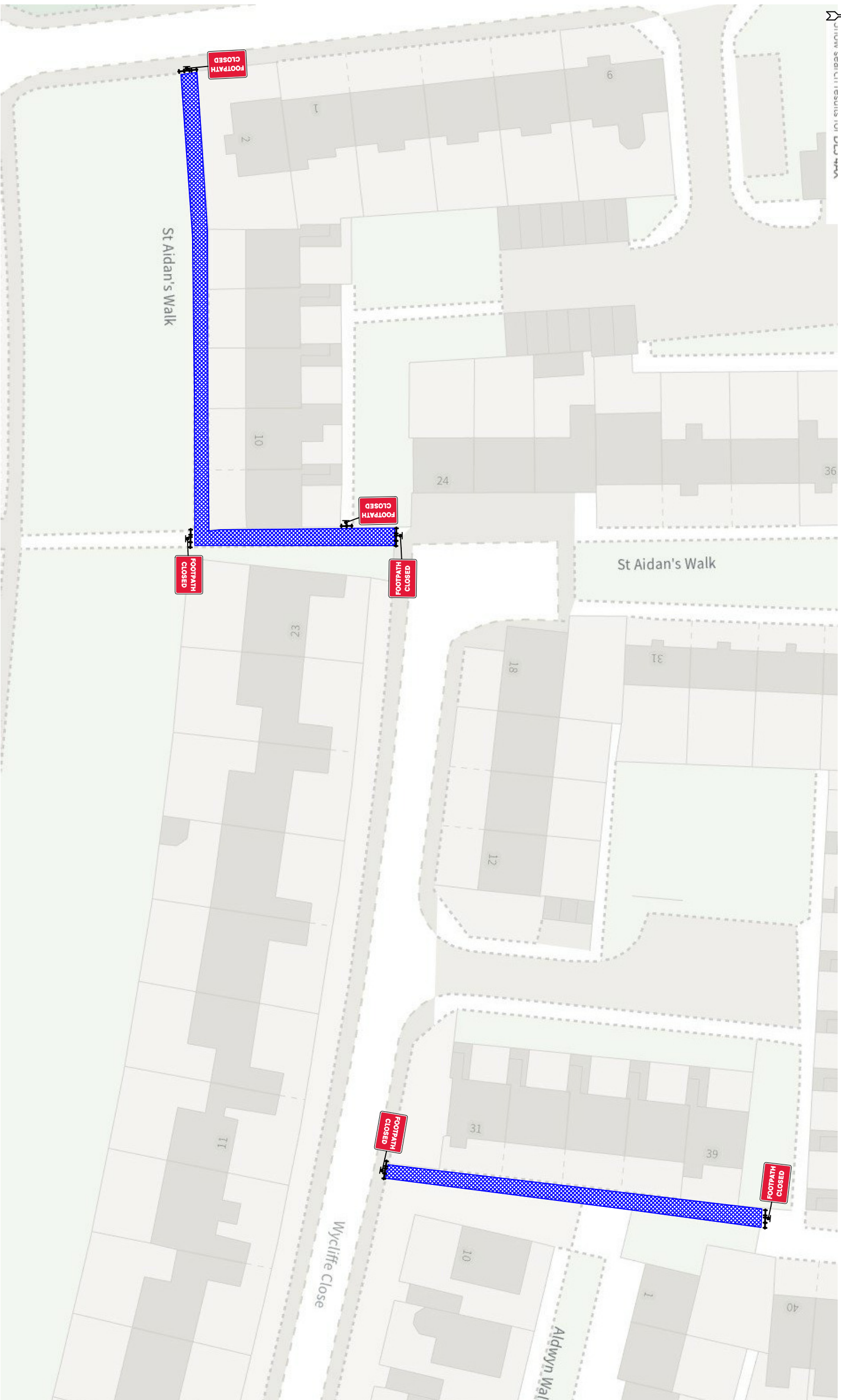
N/A

Risk

N/A

Procurement

Advertising in a public newspaper with costs recharged to the scheme/applicant



DETAIL B (B)

- Single/Dual carriageway 40mph or less - 450mm traffic cones, spacing 1.5m.
 - Single/Dual carriageway 50mph or more - 750mm traffic cones, spacing 1.5m.
 - Dual carriageway national speed limit - 750mm traffic cones, spacing 1.5m, relaxation 5m.
- Notes:
- 1) During darkness, warning lights to BS EN 12352:2006 should be provided in accordance with Table A1.3 (Appendix 1).
 - 2) 45° tapers have 1.5m spacing, no relaxations.
 - 3) On dual carriageways and two-lane roads, dual carriageway road shoulders, 1m from the edge of the carriageway, should be marked with reflective road studs.
 - 4) For lead tapers and the leading wall of lane changes.

DETAIL D (D)

- Single/Dual carriageway 40mph or less - 450mm traffic cones, spacing 1.5m.
 - Single/Dual carriageway 50mph or more - 750mm traffic cones, spacing 1.5m.
 - Dual carriageway national speed limit - 750mm traffic cones, spacing 1.5m, relaxation 5m.
- Notes:
- 1) During darkness, warning lights to BS EN 12352:2006 should be provided in accordance with Table A1.3 (Appendix 1).
 - 2) Detail D applies only to relaxation cases.

Standard, Normal traffic including Buses and HGVs	Restricted Cars and light vehicles only
Two-way working 6.75 m minimum	5.25 m minimum
Shuttle working 3.25-5.50m depending on width range	3.25m depending on minimum width
3.0 m absolute minimum	2.5 m absolute minimum

Specials -



Notes -

- KEY**
- p Traffic sign
 - Traffic cone
 - ↔ Traffic signals to Diagram 3000.1
 - Working Space
 - Pedestrian Barrier

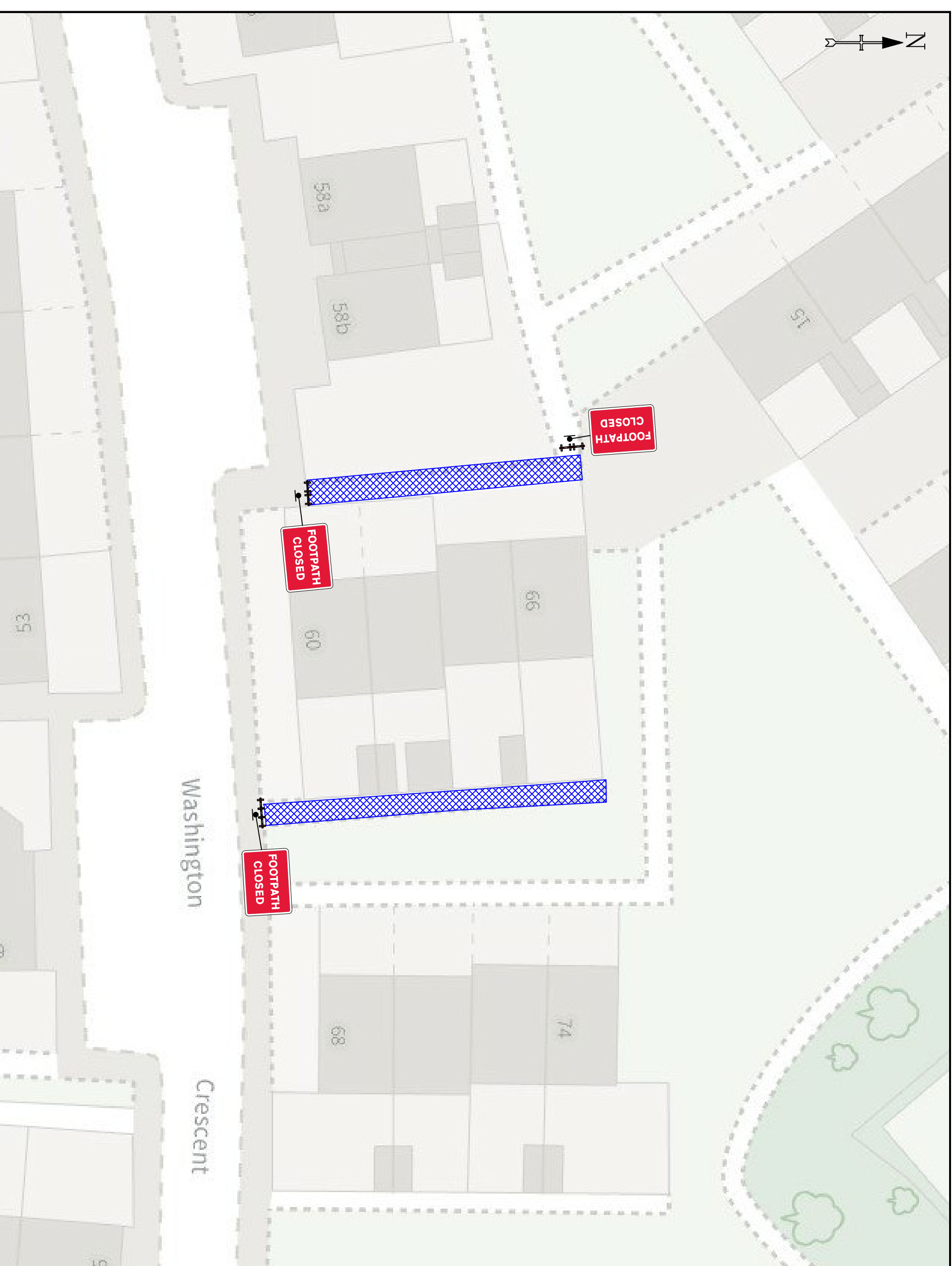
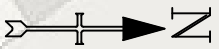


TEMPORARY
TRAFFIC MANAGEMENT
30 MPH

Issue	Date
1	18/06/24
Drawn By	JC

FOOTPATH CLOSURE - PART - 4
WASHINGTON CRESCENT, NEWTON AYCLIFFE
DL5 4AX

Original drawing size A3 - NTS
Drawing Ref: AVONLINE



TEMPORARY
TRAFFIC MANAGEMENT
30 MPH

Issue	Date
1	18/06/24
Drawn By	JC

FOOTPATH CLOSURE - PART 5
WASHINGTON CRESCENT, NEWTON AYCLIFFE
DL5 4AX

DETAIL B (B)

- Single/Dual carriageway 40mph or less - 450mm traffic cones, spacing 1.5m.
 - Single/Dual carriageway 50mph or more - 750mm traffic cones, spacing 1.5m.
 - Dual carriageway national speed limit - 750mm traffic cones, spacing 1.5m, relaxation 5m.
- Notes:
- 1) During darkness, warning lights to BS EN 12352:2006 should be provided in accordance with Table A1.3 (Appendix 1).
 - 2) 45° tapered have 1.5m spacing, no relaxations.
 - 3) On motorways and high speed roads, 1m spacing, 1.5m relaxation and 1.5m spacing, 1m relaxation.
 - 4) On dual carriageway, 1.5m spacing, 1.5m relaxation, 1.5m spacing, 1.5m relaxation for lead tapers and the flashing wall of lane changes.

DETAIL D (D)

- Single/Dual carriageway 40mph or less - 450mm traffic cones, spacing 1.5m.
 - Single/Dual carriageway 50mph or more - 750mm traffic cones, spacing 1.5m.
- Notes:
- 1) During darkness, warning lights to BS EN 12352:2006 should be provided in accordance with Table A1.3 (Appendix 1).
 - 2) Detail D applies only to relaxation cases.

Standard/Normal traffic including Buses and HGVs	Restricted Cars and light vehicles only
Two-way working 3.25-4.50m desirable width range 3.0m absolute minimum	5.25m minimum 3.25m desirable minimum width 2.5m absolute minimum

Specials -

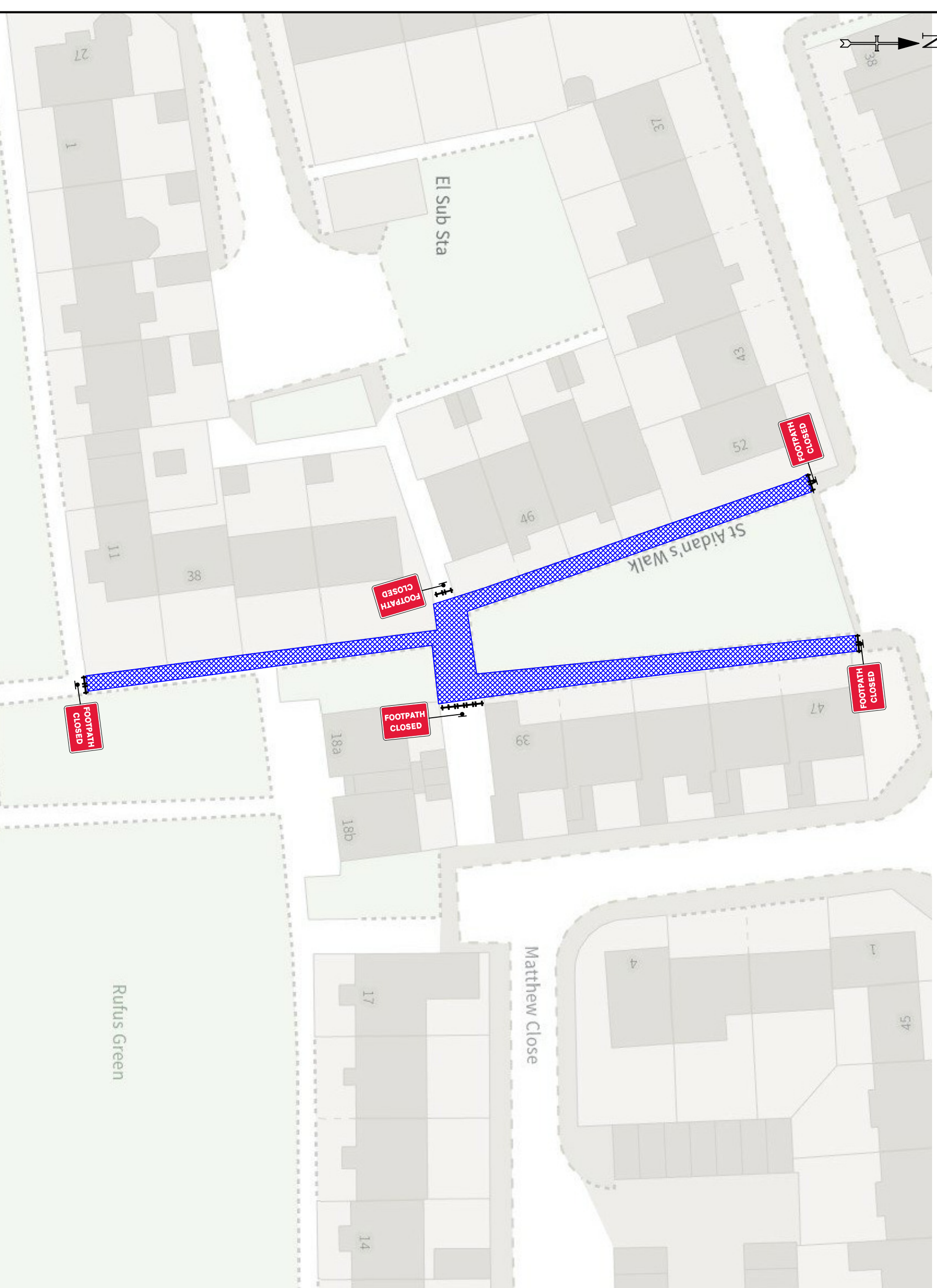


Notes -

KEY

	Traffic sign
	Traffic cone
	Traffic signals to Diagram 3000.1
	Working Space
	Pedestrian Barrier

Original drawing size A3 - NTS
Drawing Ref: AVONLINE



DETAIL B (B)

- Single/Dual carriageway 40mph or less - 450mm traffic cones, spacing 1.5m.
- Single/Dual carriageway 50mph or more - 750mm traffic cones, spacing 1.5m.
- Dual carriageway national speed limit - 750mm traffic cones, spacing 1.5m, relaxation 5m.

Notes:
 1) During darkness, warning lights to BS EN 12352:2006 should be provided in accordance with Table A1.3 (Appendix 1).
 2) 45° tapers have 1.5m spacing, no relaxators.
 3) On all footways and footpaths, standard road shoulders, 1m from the edge of the footpath, should be used and should be worked for lead tapers and the flaring wall of lane changes.

DETAIL D (D)



Notes:
 1) During darkness, warning lights to BS EN 12352:2006 should be provided in accordance with Table A1.3 (Appendix 1).
 2) Detail D applies only to relaxation cases.

	Standard, Normal traffic including Buses and HGVs	Restricted Cars and light vehicles only
Two-way working	6.75 m minimum	5.5 m minimum
Shuttle working	3.25-4.50 m desirable width range	3.25 m desirable minimum width
	3.0 m absolute minimum	2.5 m absolute minimum

Specials -



Notes -

- KEY**
- (b) Traffic sign
 - Traffic cone
 - ↔ Traffic signals to Diagram 3000.1
 - Working Space
 - ▨ Pedestrian Barrier

Original drawing size A3 - NTS

Drawing Ref:

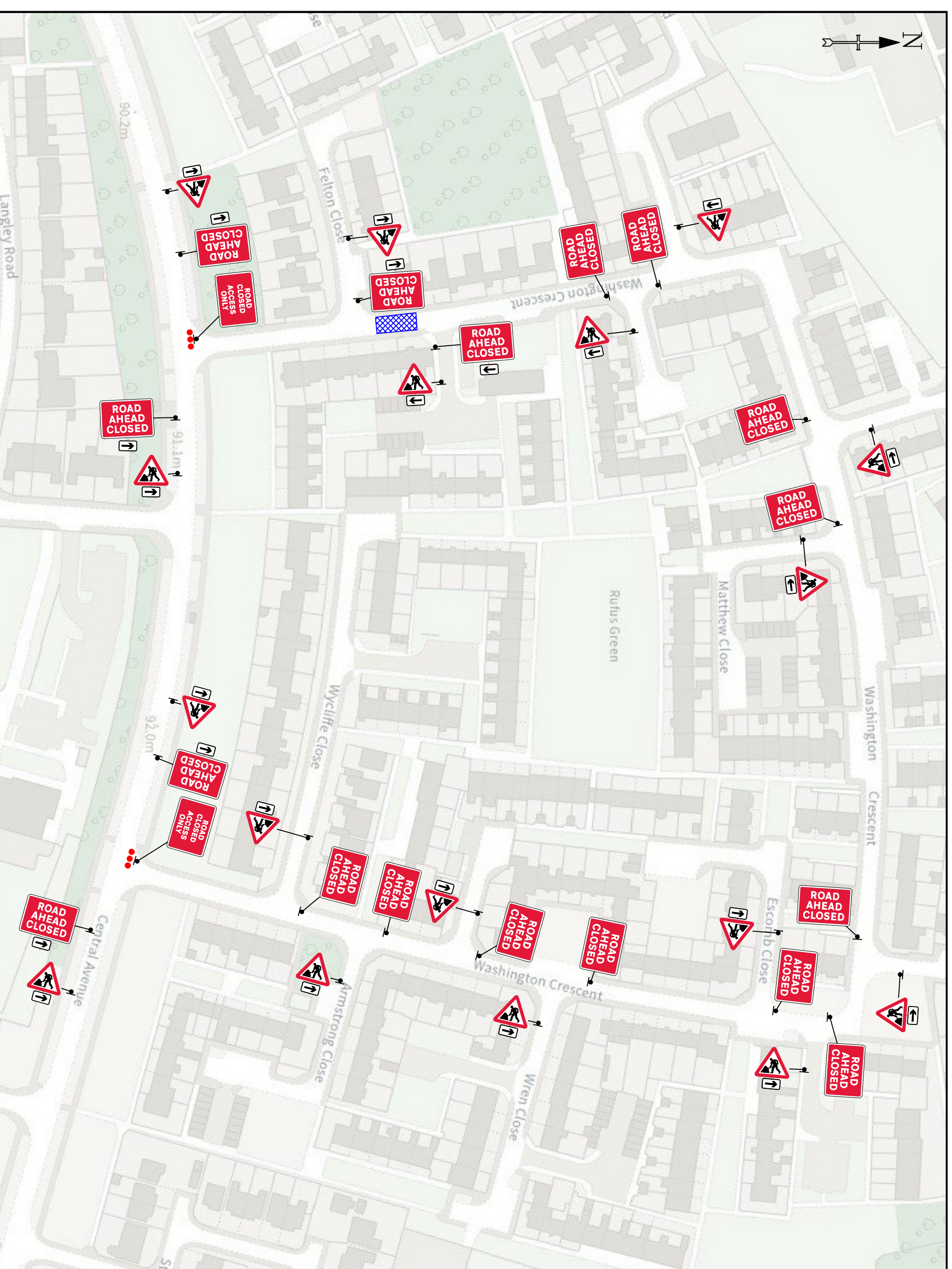
AVONLINE



TEMPORARY
 TRAFFIC MANAGEMENT
 30 MPH

Issue	Date
1	18/06/24
Drawn By	JC

FOOTPATH CLOSURE - PART 6
 WASHINGTON CRESCENT, NEWTON AYCLIFFE
 DL5 4AX



TEMPORARY
TRAFFIC MANAGEMENT
30 MPH

Issue	Date
1	25/06/24
Drawn By	JC

ROAD CLOSURE - PART 1
WASHINGTON CRESCENT, NEWTON AYCLIFFE
DL5 4BW

DETAIL B (B)

- Single/Dual carriageway 40mph or less - 450mm traffic cones, spacing 1.5m.
 - Single/Dual carriageway 50mph or more - 750mm traffic cones, spacing 1.5m.
 - Dual carriageway national speed limit - 750mm traffic cones, spacing 1.5m, relaxation 5m.
- Notes:
- 1) During darkness, warning lights to BS EN 12352:2006 should be provided in accordance with Table A1.3 (Appendix 1).
 - 2) 45t tippers have 1.5m spacing, no relaxations.
 - 3) On motorways and roads with dual carriageways, 1m spacing will be used and both standard and directional works for lead tapers and the facing wall of lane changes.

DETAIL D (D)

- Single/dual carriageway 40mph or less - 450mm traffic cones, spacing 1.5m.
- Single/dual carriageway 50mph or more - 750mm traffic cones, spacing 1.5m.

- Notes:
- 1) During darkness, warning lights to BS EN 12352:2006 should be provided in accordance with Table A1.3 (Appendix 1).
 - 2) Detail D applies only to relaxation cases.

Standard: Normal traffic including buses and HGVs	Restricted: Cars and light vehicles only
Two-way working 6.75 m minimum	5.5 m minimum
Single working 3.25-4.50 m (variable width range)	3.25 m (variable minimum width)
3.0 m (variable minimum)	2.5 m (variable minimum)

Specials -



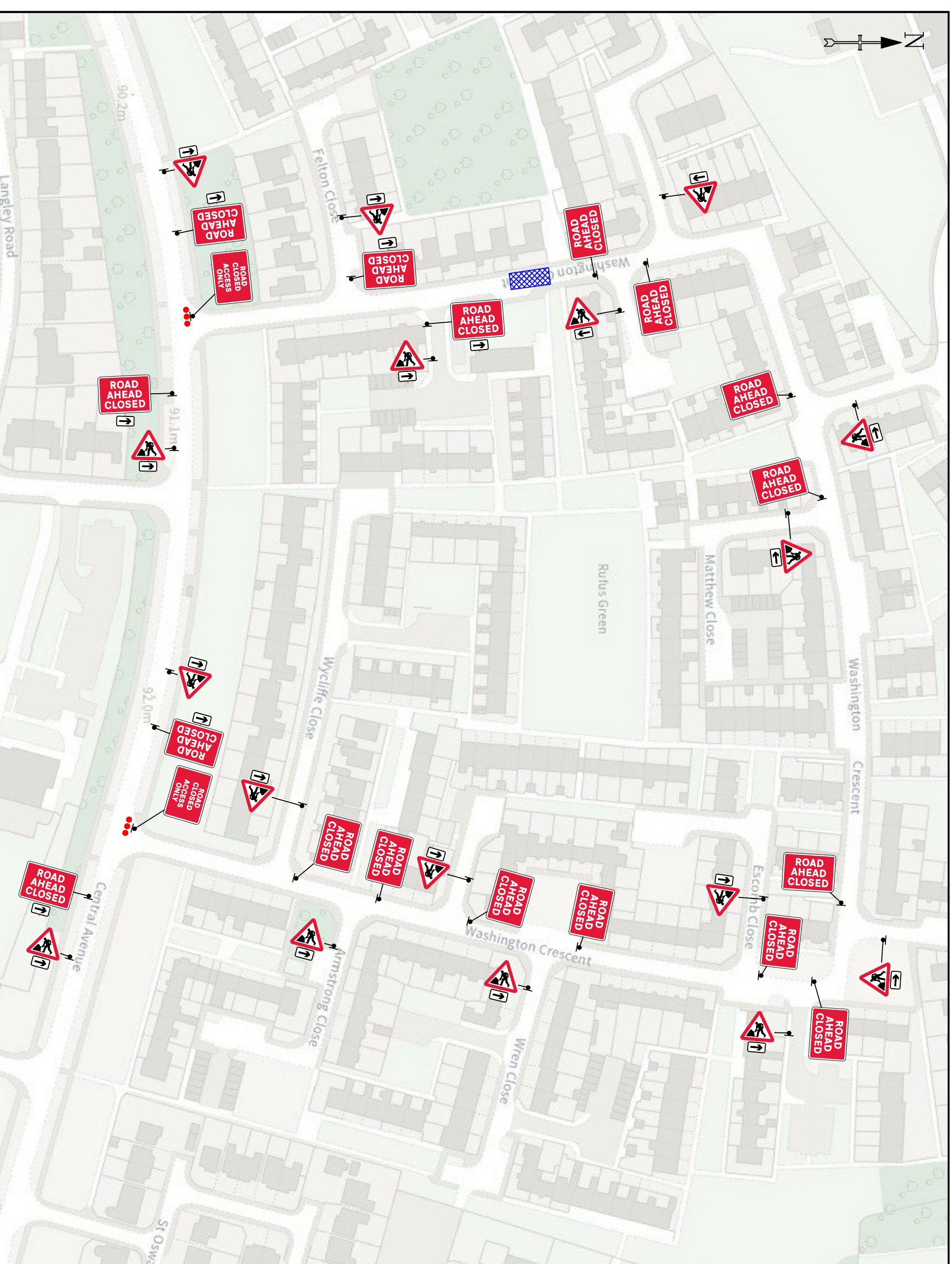
Notes -

KEY

	Traffic sign
	Traffic cone
	Traffic signals to Diagram 3000.1
	Working Space
	Pedestrian Barrier

Original drawing size A3 - NTS

Drawing Ref: **AVONLINE**



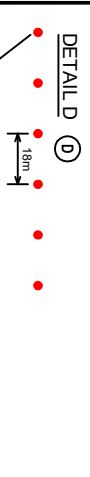
TEMPORARY
TRAFFIC MANAGEMENT
30 MPH

Issue	Date
1	25/06/24
Drawn By	JC

ROAD CLOSURE - PART 2
WASHINGTON CRESCENT, NEWTON AYCLIFFE
DL5 4BW

DETAIL B (B)

- Single/dual carriageway 40mph or less - 450mm traffic cones, spacing 1.5m.
 - Single/dual carriageway 50mph or more - 750mm traffic cones, spacing 1.5m.
 - Dual carriageway national speed limit - 750mm traffic cones, spacing 1.5m, relaxation 5m.
- Notes:
- 1) During darkness, warning lights to BS EN 12352:2006 should be provided in accordance with Table A1.3 (Appendix 1).
 - 2) 45° tapers have 1.5m spacing, no relaxations.
 - 3) On all carriageways and both sides of the road shoulders, 1m spacing shall be used for the cones and the cones shall be placed for lead tapers and the facing wall of lane changes.



- Notes:
- 1) During darkness, warning lights to BS EN 12352:2006 should be provided in accordance with Table A1.3 (Appendix 1).
 - 2) Detail D applies only to relaxation cases.

Standard / Normal traffic including bases and holes	Restricted: Cars and light vehicles only
Two-way working 6.25 m minimum	5.5 m minimum
Single working 3.25-4.50 m depending on width range	3.25 m depending on minimum width
3.0 m in absolute minimum	2.5 m in absolute minimum

Specials -

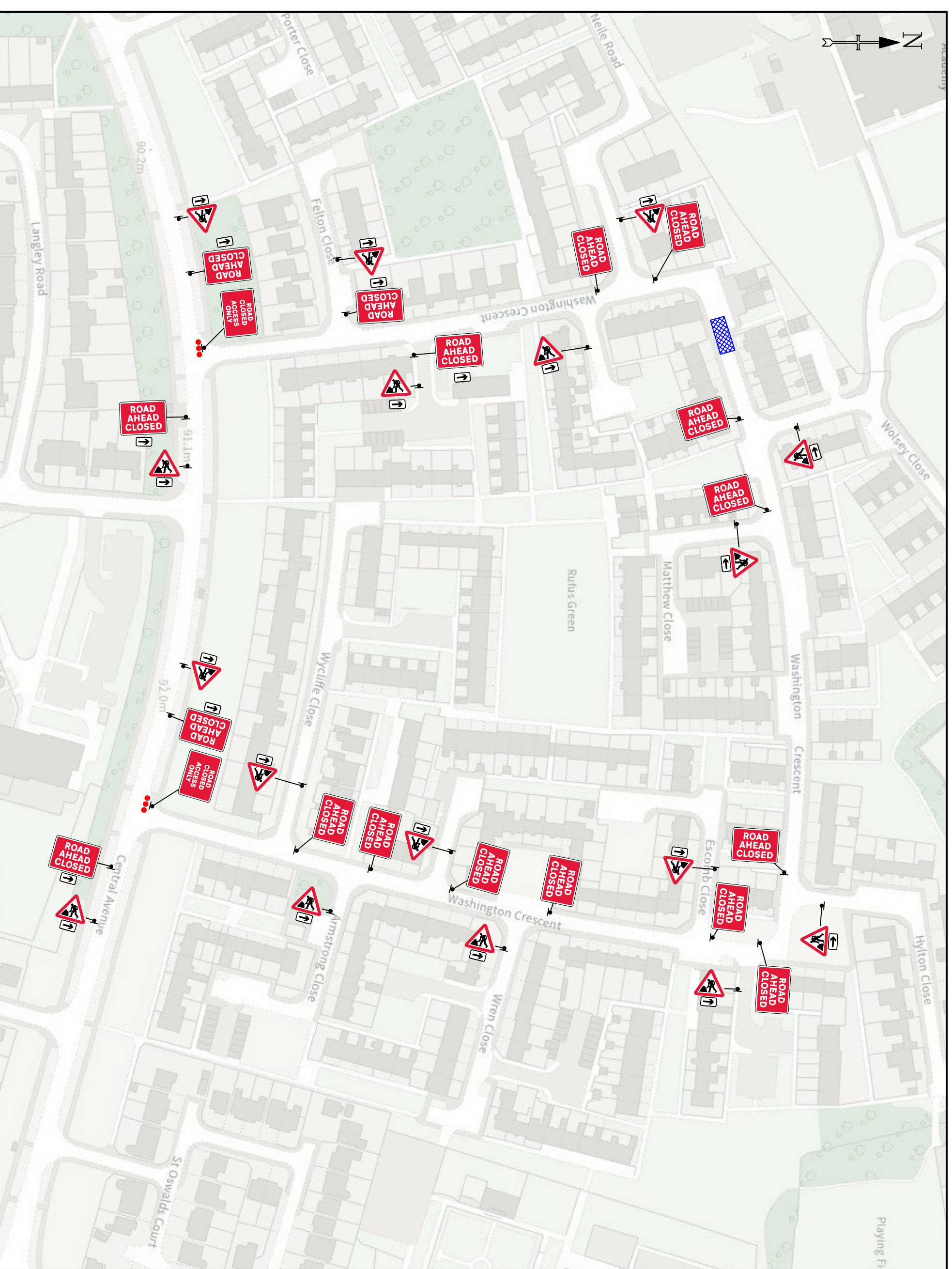


Notes -

KEY

	Traffic sign
	Traffic cone
	Traffic signals to Diagram 3000.1
	Working Space
	Pedestrian Barrier

Original drawing size A3 - NTS
Drawing Ref: AVONLINE



TEMPORARY
TRAFFIC MANAGEMENT
30 MPH

Issue	Date
1	25/06/24
Drawn By	JC

ROAD CLOSURE - PART 3
WASHINGTON CRESCENT, NEWTON AYCLIFFE
DL5 4BW

DETAIL B (B)

- Single/dual carriageway 40mph or less - 450mm traffic cones, spacing 1.5m.
- Single/dual carriageway 50mph or more - 750mm traffic cones, spacing 1.5m.
- Dual carriageway national speed limit - 750mm traffic cones, spacing 1.5m, relaxation 5m.

Notes:
1) During darkness, warning lights to BS EN 12352:2006 should be provided in accordance with Table A1.3 (Appendix 1).
2) 45° tapered have 1.5m spacing, no relaxations.
3) On all motorways and 40mph or less dual carriageway shoulders, 1m relaxation is required for both sides of the road and shoulders works for lead tapers and the facing wall of lane changes.

DETAIL D (D)

- Single/dual carriageway 40mph or less - 450mm traffic cones, spacing 1.5m.
- Single/dual carriageway 50mph or more - 750mm traffic cones, spacing 1.5m.

Notes:
1) During darkness, warning lights to BS EN 12352:2006 should be provided in accordance with Table A1.3 (Appendix 1).
2) Detail D applies only to relaxation cases.

Standard / Normal traffic including Buses and HGVs	Restricted: Cars and light vehicles only
Two-way working 6.75 m minimum	5.5 m minimum
Single working 3.25-4.50 m (variable width range)	3.25 m (variable minimum width)
Shoulder working 3.0 m (variable minimum)	2.5 m (variable minimum)

Specials -

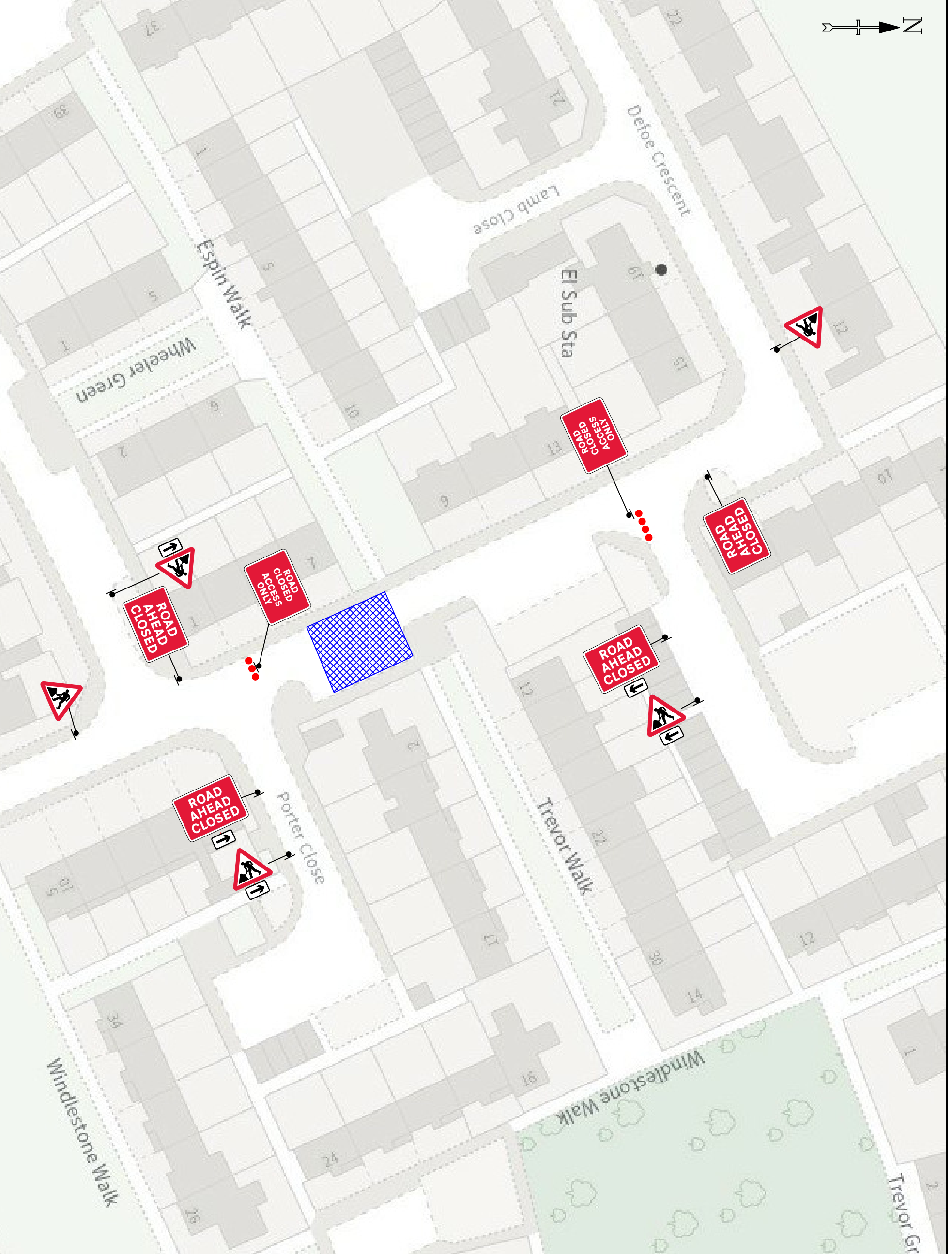
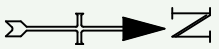


Notes -

KEY

	Traffic sign
	Traffic cone
	Traffic signals to Diagram 3000.1
	Working Space
	Pedestrian Barrier

Original drawing size A3 - NTS
Drawing Ref: AVONLINE



TEMPORARY
TRAFFIC MANAGEMENT
30 MPH

Issue	Date
1	25/06/24
Drawn By	JC

ROAD CLOSURE
DEFOE CRESCENT, NEWTON AYCLIFFE
DL5 4JP

DETAIL B (B)

- Single/Dual carriageway 40mph or less - 450mm traffic cones, spacing 1.5m.
 - Single/Dual carriageway 50mph or more - 750mm traffic cones, spacing 1.5m.
 - Dual carriageway national speed limit - 750mm traffic cones, spacing 1.5m, relaxation 5m.
- Notes:
- 1) During darkness, warning lights to BS EN 12352:2006 should be provided in accordance with Table A1.3 (Appendix 1).
 - 2) 45° tapers have 1.5m spacing, no relaxators.
 - 3) On motorways and high speed roads, 1m spacing and 1.5m relaxation should be used.
 - 4) Relaxation should be used for lead tapers and the flagging wall of lane changes.

DETAIL D (D)

- Single/Dual carriageway 40mph or less - 450mm traffic cones, spacing 1.5m.
- Single/Dual carriageway 50mph or more - 750mm traffic cones, spacing 1.5m.

- Notes:
- 1) During darkness, warning lights to BS EN 12352:2006 should be provided in accordance with Table A1.3 (Appendix 1).
 - 2) Detail D applies only to relaxation cases.

Two-way working	Standard, Normal traffic including Buses and HGVs	Restricted Cars and light vehicles only
6.75 m minimum	6.75 m minimum	5.5 m minimum
3.25-5.50 m (variable width range)	3.25-5.50 m (variable width range)	3.25 m (variable minimum width)
3.0 m (variable minimum)	3.0 m (variable minimum)	2.5 m (variable minimum)

Specials -

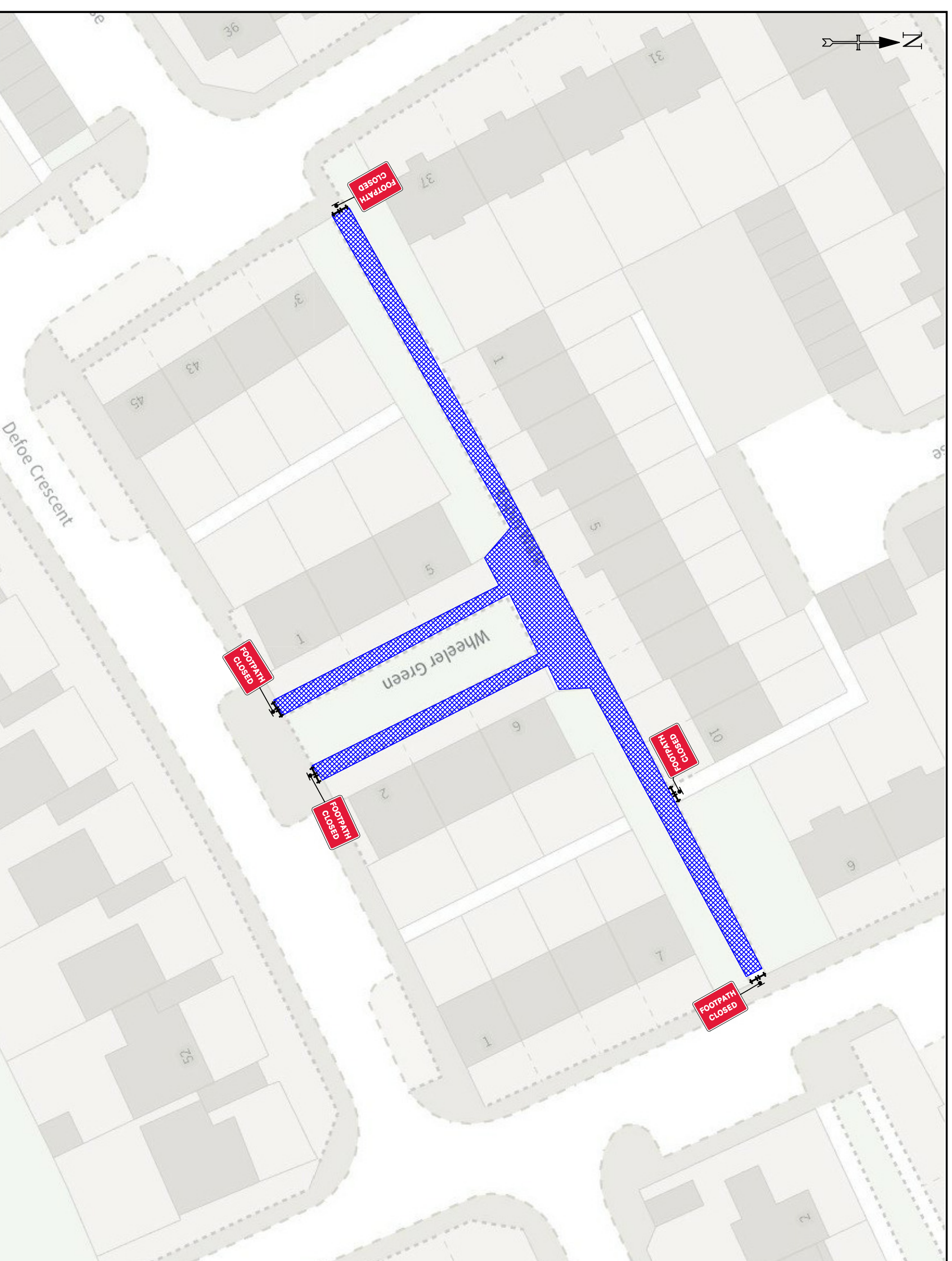


Notes -

KEY

	Traffic sign
	Traffic cone
	Traffic signals to Diagram 3000.1
	Working Space
	Pedestrian Barrier

Original drawing size A3 - NTS
Drawing Ref: AVONLINE



TEMPORARY
TRAFFIC MANAGEMENT
30 MPH

Issue	Date
1	18/06/24
Drawn By	JC

FOOTPATH CLOSURE - PART 2
WASHINGTON CRESCENT, NEWTON AYCLIFFE
DL5 4AX

DETAIL B (B)

- Single/Dual carriageway 40mph or less - 450mm traffic cones, spacing 1.5m.
- Single/Dual carriageway 50mph or more - 750mm traffic cones, spacing 1.5m.
- Dual carriageway national speed limit - 750mm traffic cones, spacing 1.5m, relaxation 5m.

Notes:
1) During darkness, warning lights to BS EN 12352:2006 should be provided in accordance with Table A1.3 (Appendix 1).
2) 45° tapers have 1.5m spacing, no relaxators.
3) On all roadways and footpaths, all road shoulders, 1m down hill, kerbs and footpaths should be closed and marked with orange cones for lead tapers and the flashing wall of lane changes.



Notes:
1) During darkness, warning lights to BS EN 12352:2006 should be provided in accordance with Table A1.3 (Appendix 1).
2) Detail D applies only to relaxation cases.

Two-way working	Standard, Normal traffic including buses and HGVs	Restricted Cars and light vehicles only
6.75 m minimum	5.5 m minimum	5.5 m minimum
3.25-4.50 m desirable width range	3.25 m desirable minimum width	3.25 m desirable minimum width
3.0 m absolute minimum	2.5 m absolute minimum	2.5 m absolute minimum

Specials -

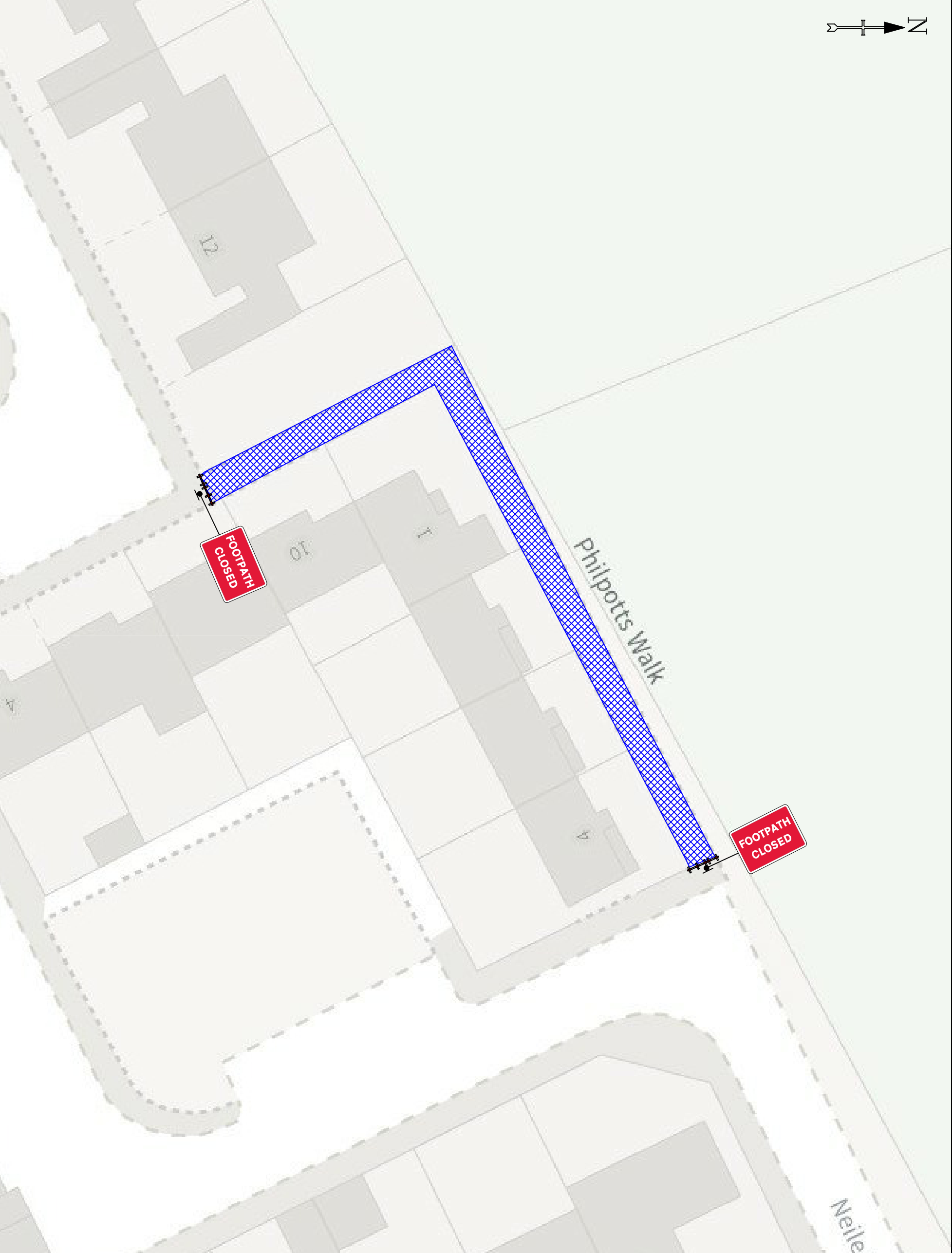
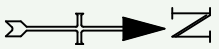


Notes -

- KEY**
- p** Traffic sign
 - Traffic cone
 - ↔ Traffic signals to Diagram 3000.1
 - Working Space
 - ▬ Pedestrian Barrier

Original drawing size A3 - NTS

Drawing Ref: **AVONLINE**



DETAIL B

- Single/Dual carriageway 40mph or less - 450mm traffic cones, spacing 1.5m.
- Single/Dual carriageway 50mph or more - 750mm traffic cones, spacing 1.5m.
- Dual carriageway national speed limit - 750mm traffic cones, spacing 1.5m, relaxation 5m.

Notes:
 1) During darkness, warning lights to BS EN 12352:2006 should be provided in accordance with Table A1.3 (Appendix 1).
 2) 45° tapers have 1.5m spacing, no relaxators.
 3) On motorways and high speed roads, 4m spacing of road shoulders, 4m spacing of road edges and 10m spacing of road shoulders works for lead tapers and the facing wall of lane changes.

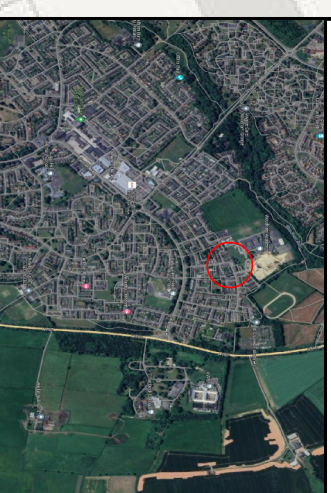
DETAIL D

- Single/Dual carriageway 40mph or less - 450mm traffic cones, spacing 1.5m.
- Single/Dual carriageway 50mph or more - 750mm traffic cones, spacing 1.5m.
- Dual carriageway national speed limit - 750mm traffic cones, spacing 1.5m, relaxation 5m.

Notes:
 1) During darkness, warning lights to BS EN 12352:2006 should be provided in accordance with Table A1.3 (Appendix 1).
 2) Detail D applies only to relaxation cases.

	Standard, Normal traffic, including buses and HGVs	Restricted Cars and light vehicles only
Two-way working	6.75 m minimum	5.5 m minimum
Shuttle working	3.25-4.50 m desirable width range	3.25 m desirable minimum width
	3.10 m absolute minimum	2.5 m absolute minimum

Specials -



Notes -

- KEY**
- Traffic sign
 - Traffic cone
 - Traffic signals to Diagram 3000.1
 - Working Space
 - Pedestrian Barrier

Original drawing size A3 - NTS

Drawing Ref:

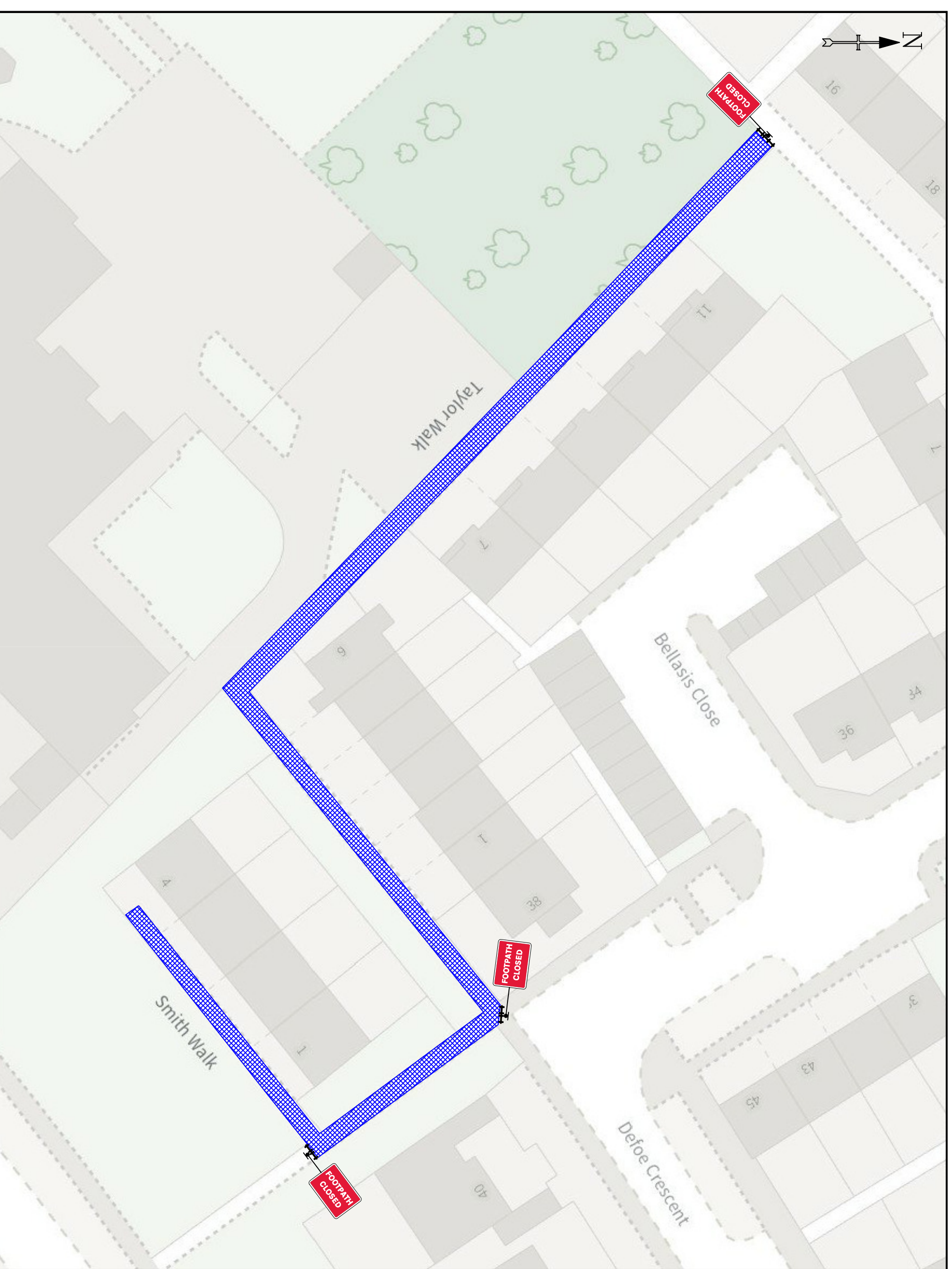
AVONLINE

TEMPORARY
TRAFFIC MANAGEMENT
30 MPH

Issue	Date
1	18/06/24
Drawn By	JC

FOOTPATH CLOSURE - PART 3
WASHINGTON CRESCENT, NEWTON AYCLIFFE
DL5 4AX

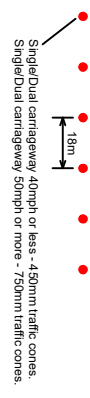




DETAIL B (B)

- Single/Dual carriageway 40mph or less - 450mm traffic cones, spacing 1.5m.
 - Single/Dual carriageway 50mph or more - 750mm traffic cones, spacing 1.5m.
 - Dual carriageway national speed limit - 750mm traffic cones, spacing 1.5m, relaxation 5m.
- Notes:
- 1) During darkness, warning lights to BS EN 12352:2006 should be provided in accordance with Table A1.3 (Appendix 1).
 - 2) 45° tapers have 1.5m spacing, no relaxations.
 - 3) On dual carriageways and footpaths, dual carriageway road shoulders, 1m from the edge of the carriageway, should be marked and closed during works for lead tapers and the facing wall of lane changes.

DETAIL D (D)



- Single/Dual carriageway 40mph or less - 450mm traffic cones, spacing 1.5m.
 - Single/Dual carriageway 50mph or more - 750mm traffic cones, spacing 1.5m.
- Notes:
- 1) During darkness, warning lights to BS EN 12352:2006 should be provided in accordance with Table A1.3 (Appendix 1).
 - 2) Detail D applies only to relaxation cases.

Standard / Normal traffic including buses and HGVs	Restricted Cars and light vehicles only
Two-way working 6.75 m minimum	5.25 m minimum
Single working 3.25-4.50 m desirable width range	3.25 m desirable minimum width
3.0 m absolute minimum	2.5 m absolute minimum

Specials -



Notes -

- KEY**
- p Traffic sign
 - Traffic cone
 - ↔ Traffic signals to Diagram 3000.1
 - Working Space
 - ▬ Pedestrian Barrier

Original drawing size A3 - NTS

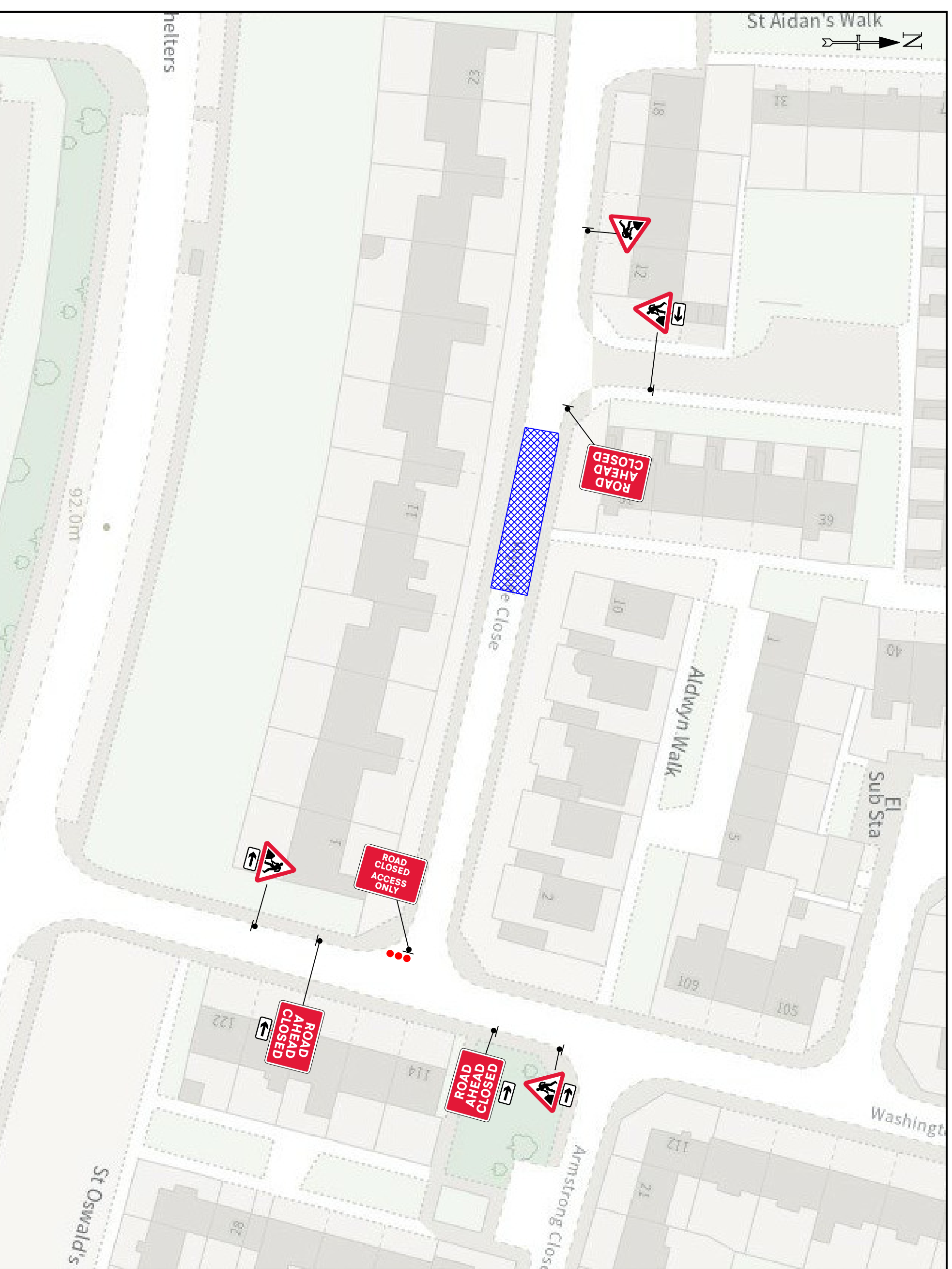
Drawing Ref: **AVONLINE**



TEMPORARY
TRAFFIC MANAGEMENT
30 MPH

Issue	Date
1	18/06/24
Drawn By	JC

FOOTPATH CLOSURE - PART 1
WASHINGTON CRESCENT, NEWTON AYCLIFFE
DL5 4AX



DETAIL B (B)

- Single/Dual carriageway 40mph or less - 450mm traffic cones, spacing 1.5m.
 - Single/Dual carriageway 50mph or more - 750mm traffic cones, spacing 1.5m.
 - Dual carriageway national speed limit - 750mm traffic cones, spacing 1.5m, relaxation 5m.
- Notes:
- 1) During darkness, warning lights to BS EN 12352:2006 should be provided in accordance with Table A1.3 (Appendix 1).
 - 2) 45° tapers have 1.5m spacing, no relaxations.
 - 3) On all highways and footpaths, standard shoulders, 1m relaxation shall be provided on both sides and standard shoulders works for lead tapers and the flaring wall of lane changes.

DETAIL D (D)

- Single/Dual carriageway 40mph or less - 450mm traffic cones, spacing 1.5m.
 - Single/Dual carriageway 50mph or more - 750mm traffic cones, spacing 1.5m, relaxation 5m.
- Notes:
- 1) During darkness, warning lights to BS EN 12352:2006 should be provided in accordance with Table A1.3 (Appendix 1).
 - 2) Detail D applies only to relaxation cases.

Standard, Normal traffic including Buses and HGVs	Restricted Cars and light vehicles only
Two-way working 6.75 m minimum	5.25 m minimum
Single working 3.25-5.50 m desirable width range	3.25 m desirable minimum width
3.0 m absolute minimum	2.5 m absolute minimum

Specials -



Notes -

KEY

	Traffic sign
	Traffic cone
	Traffic signals to Diagram 3000.1
	Working Space
	Pedestrian Barrier



TEMPORARY
TRAFFIC MANAGEMENT
30 MPH

Issue	Date
1	25/06/24
Drawn By	JC

ROAD CLOSURE
WYCLIFFE CLOSE, NEWTON AYCLIFFE
DL5 4BN

Original drawing size A3 - NTS
Drawing Ref: AVONLINE